

Port IoT for Environmental Leverage



Preparing for the Future of Ports: EU funded tools, technologies & policies

23rd June 2020

Rethinking transport
traconference.eu
#TRA2020

Hosted and organised by:



Co-organised by:



Together with:

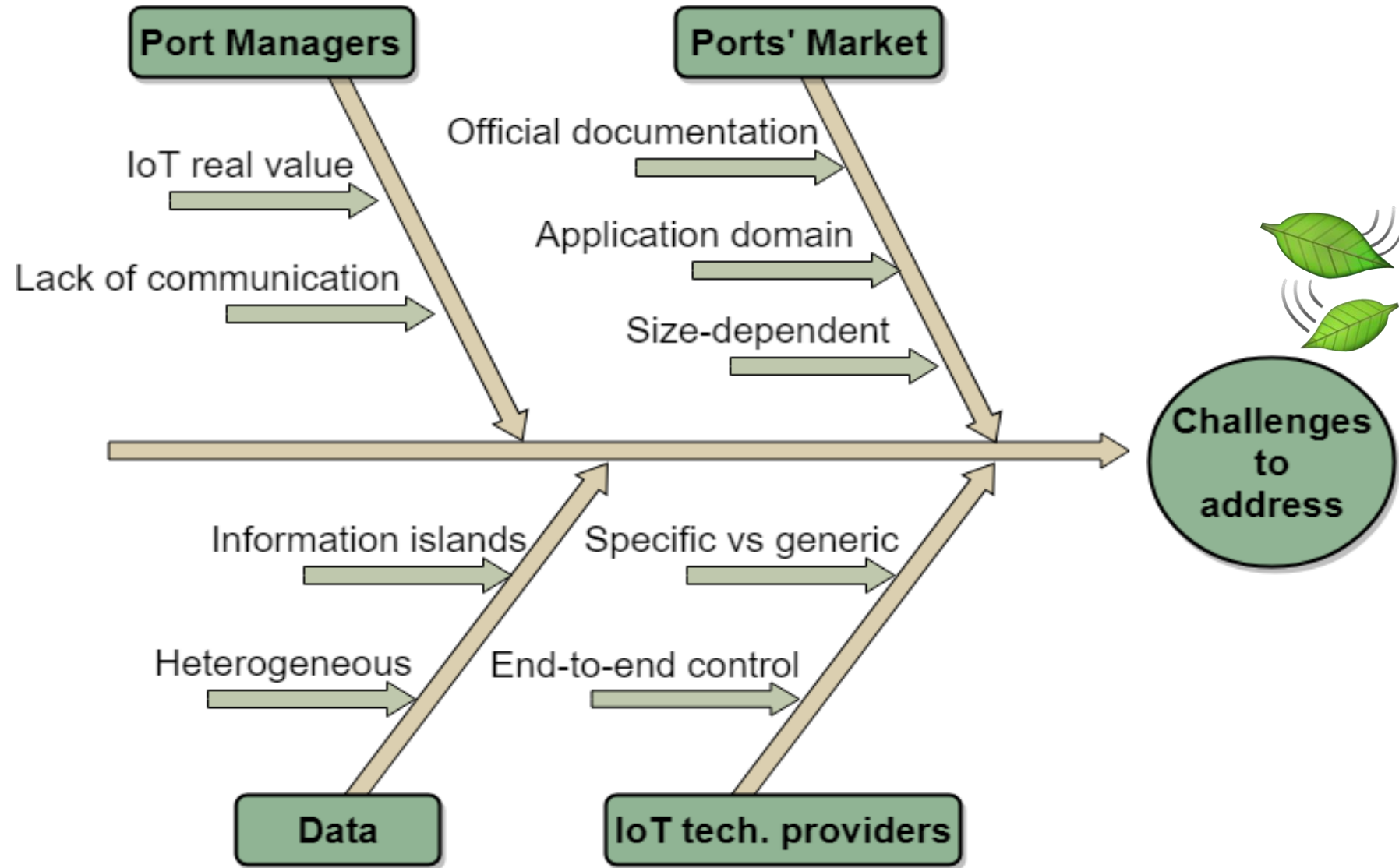
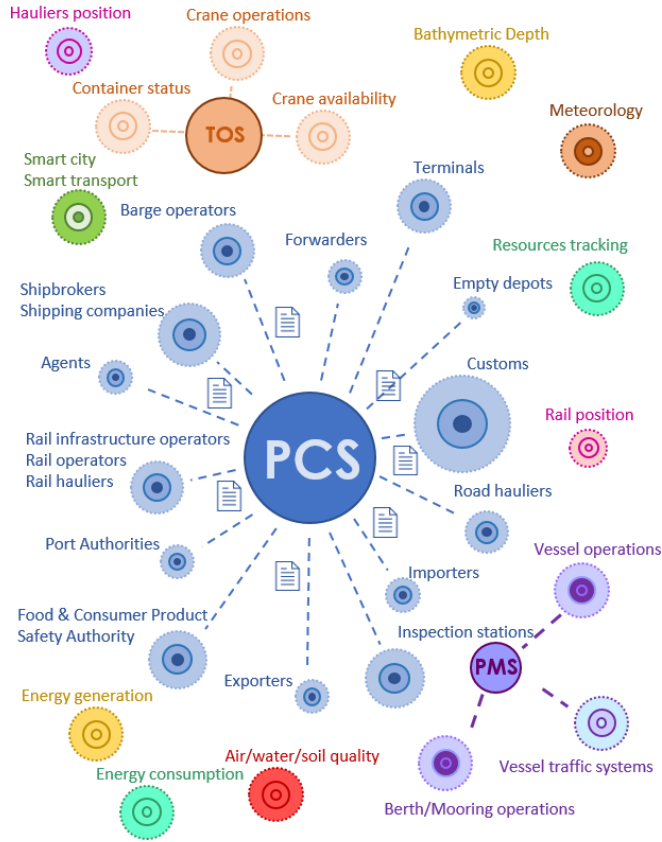


Why PIXEL?



PIXEL

Challenges



How PIXEL proposes to drive digitisation towards Port of the Future

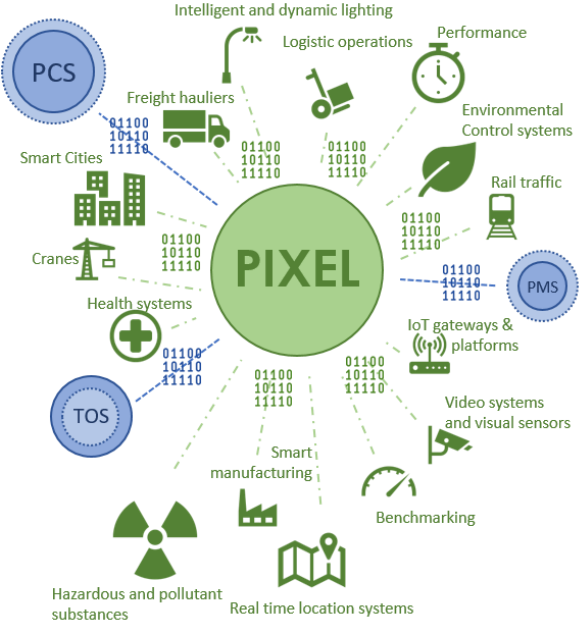


Data sources interoperability

Centralised Management

PIXEL as integrator + tool

Democratisation and awareness



PIXEL pilots

Usage in real life port scenarios

PEI use-case (transversal to all ports)

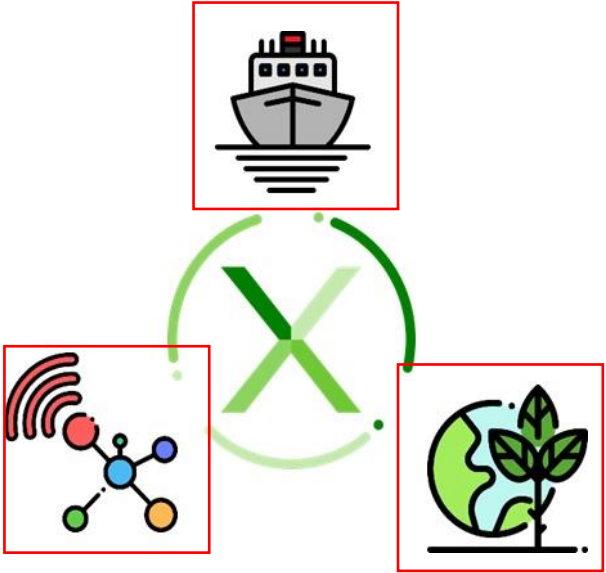
PORT OF MONFALCONE
Intermodal transport use-case

PORT OF BORDEAUX
Energy management use-case

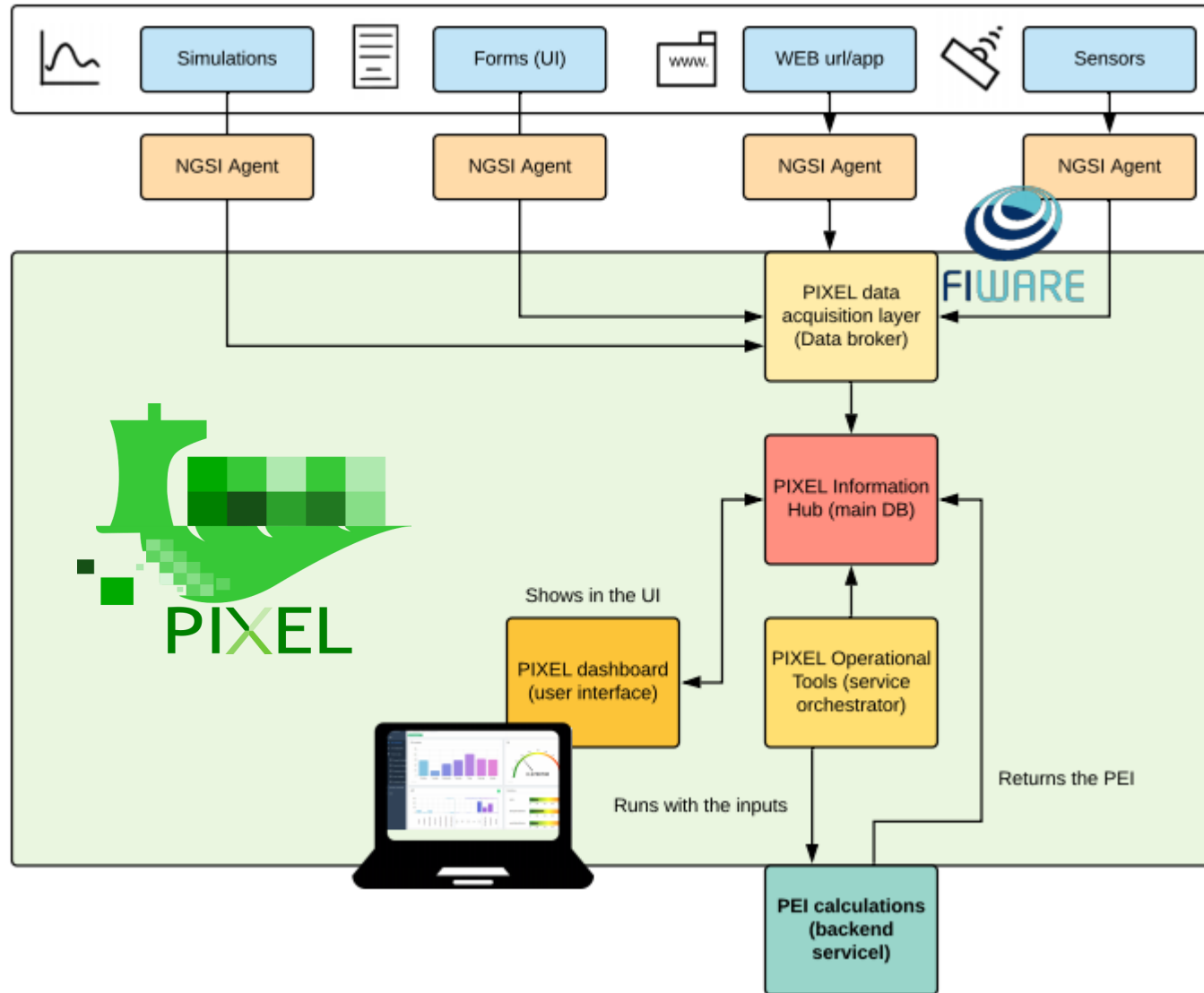
**PORT OF PIRAEUS &
PORT OF THESSALONIKI**
Port-city integration use-case



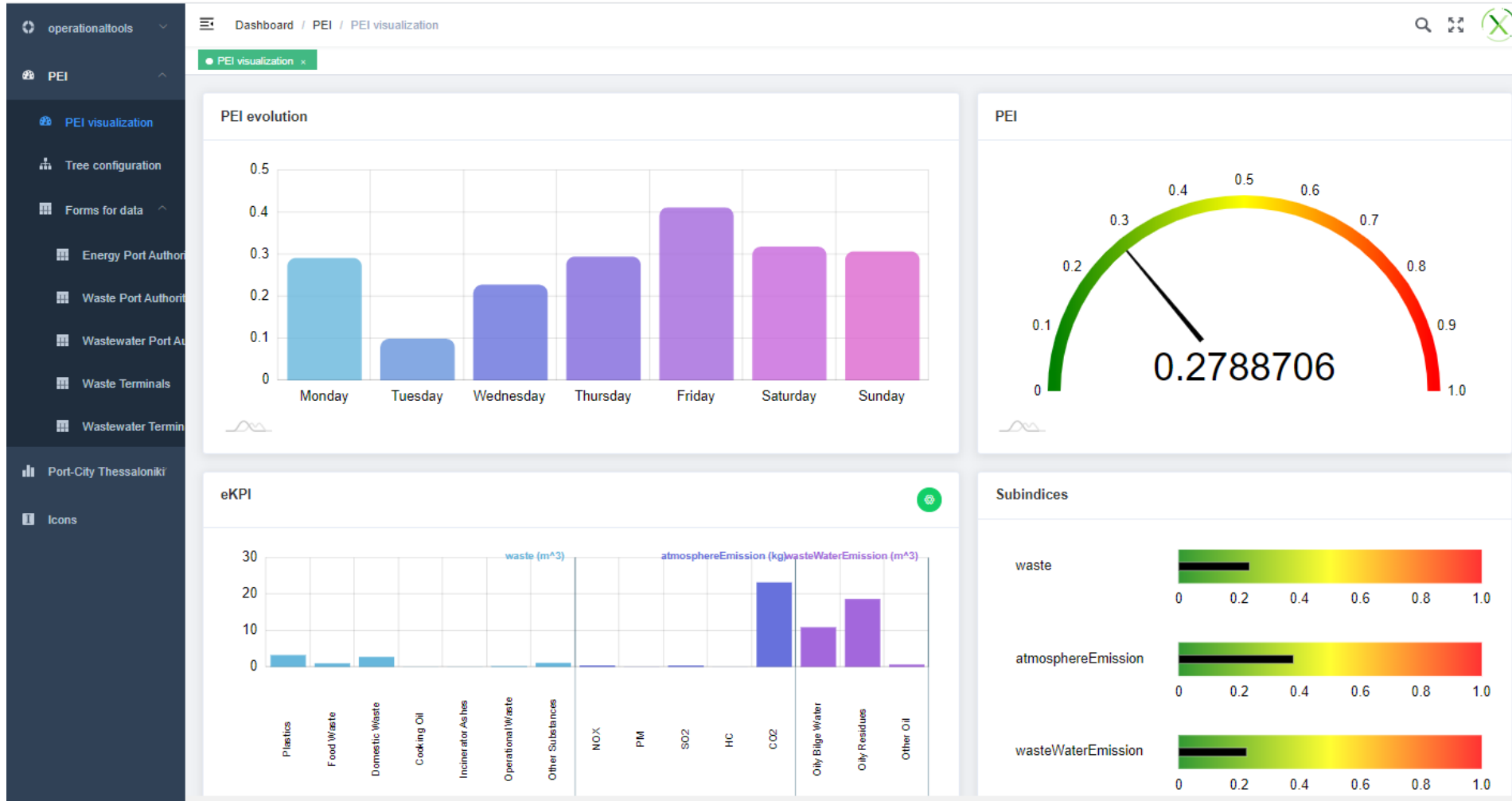
PIXEL tool for achieving greener European Ports : the PEI



Technological platform



Port Environmental Index Tool



A closer look to PEI usage

What PEI is

- **PEI** is a single indicator reflecting how much port (as a whole) activities impact the environment, serving as decision support.
- **PEI** is a tool for comparing environmental performance by a port between two time points.
- **PEI** is a tool for comparing environmental performance among ports.
- **PEI** is an affordable, open source tool normalized per cargo, able to be used in any port size-independently.
- **PEI** is a real-time software tool that improves its accuracy in direct proportion to IoT/reliable sources usage.

What PEI is not

- **PEI** is not a standalone solution. It needs to be used altogether with PIXEL technological setup.
- **PEI** is not a tool for auditing a port nor punishing it upon environmental sanctionable issues.
- **PEI** does not require an expensive, ultra modern equipment asset.
- **PEI** is not a observe-analyse-automatically act tool. It needs human interpretation and application towards real operations in a port.

Port IoT for Environmental Leverage

Prepare for the Future of Ports: EU funded tools, technologies and policies

23rd June 2020

THANK YOU!!

Q&A?

This Communication is part of a project that has received funding from the European Union's Horizon 2020 research and innovation programme under grant agreement N°769355



Stay tuned at :



<https://pixel-ports.eu>



@PortsPixel



@PixelPorts



@Pixel-Ports



Rethinking transport

traconference.eu

#TRA2020